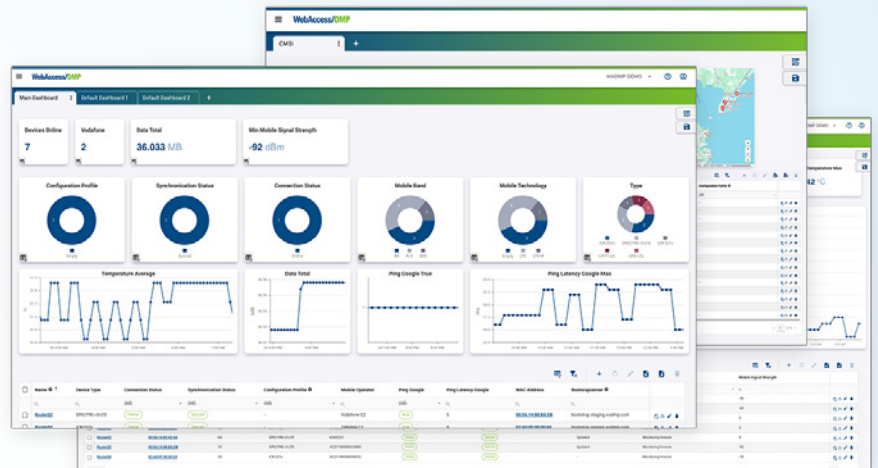


# WebAccess/DMP

INDUSTRIAL NETWORK MANAGEMENT  
**POWERFUL, FLEXIBLE, AND SECURE**

- ✓ Centralized management for routers
- ✓ VPN management
- ✓ Digital twin model
- ✓ Zero touch functionality
- ✓ Customizable and multiple dashboards
- ✓ Monitoring and auditing
- ✓ 2FA extra security layer
- ✓ Fully API Enabled



TRY IT OUT  
[www.wadmp3.com](http://www.wadmp3.com)  
**FREE**



**ADVANTECH**

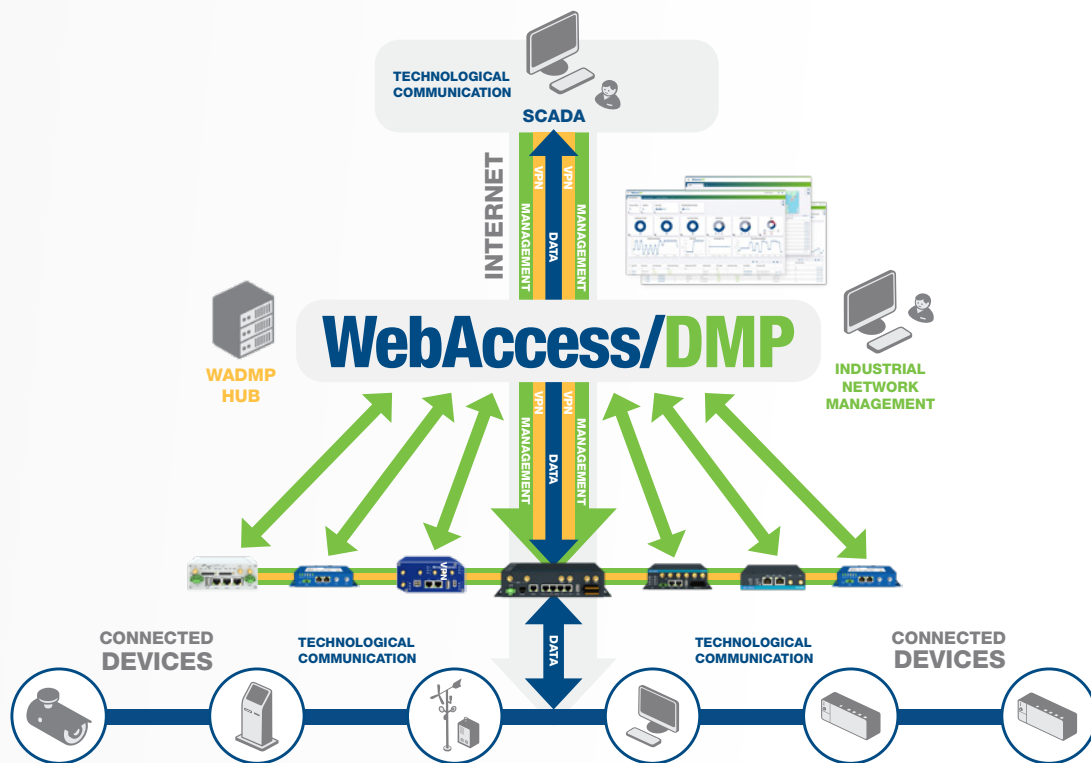
*Enabling an Intelligent Planet*

[www.advantech.com](http://www.advantech.com)

# WebAccess/DMP

## Industrial Router Network Management - Powerful, Flexible, and Secure

**WebAccess/DMP** provides **centralized management** for your routers, allowing **remote configuration** and **monitoring** with **customizable dashboards** and **alerts**. It enhances security with **two-factor authentication** and **PKI encryption**. Complementing this, **VPN Management** simplifies network connectivity by **automating VPN setup** across diverse networks. Leveraging **WireGuard VPN** for its speed and security, it streamlines network management with features like **zero-touch provisioning**, flexible router grouping, and independent interface settings. This integrated solution **enhances network security**, **simplifies operations**, and **empowers businesses** with **greater control and visibility** over their network infrastructure.



### TRANSACTION MANAGEMENT

## APPLICATION EXAMPLE



**Region:** EMEA

**Product:** ICR-2000, ICR-4100, **WebAccess/DMP**

**Application:** On-line transactional networks for national lotteries

- Dual SIM failover capability
- Support of Multicast
- DMVPN / GRE tunnels support
- Automatic mass update of configuration and firmware update
- Management and monitoring missions **WebAccess/DMP**

## BUSSINESS MODELS

### CLOUD



- Subscription based
- Pricing: Monthly subscription based on the number of devices.
- No need for in-house server infrastructure.
- Scalable – easily add or remove devices as needed.

### ON-PREMISES



- One-time upfront payment.
- Software installed on the customer's own servers.
- Full control of infrastructure.
- Suitable for businesses with strict regulatory or security requirements.
- Requires internal IT resources for maintenance, updates, and security.

# INDUSTRIAL ROUTER NETWORK MANAGEMENT

## POWERFUL

### VPN Management

Simplifies secure connectivity for critical industrial networks by automating router configurations, leveraging WireGuard VPN for high-speed security, and supporting flexible deployment with VPN RoadWarriors access.

### Digital Twin Model

Every device has its virtual counterpart within the application. This enables continuous monitoring and management of real and virtual devices configured identically.

### Configuration Profile Management

Easily create and assign configuration profiles with settings like firmware versions and RouterApp lists to one or many devices. Compare profiles to spot differences.

### Ping Tools

Check the health of your systems with unlimited ping monitoring that shows real-time status and latency. Quickly spot network issues before they disrupt performance.

### Efficient Data Handling

The application facilitates the export of router parameter tables to CSV files, enabling adjustments and subsequent importation back into the system.

### Zero Touch Deployment

Configure devices remotely without needing to be on-site. Pre-set configurations are applied automatically when a device connects, keeping everything updated.

## FLEXIBLE

### Customizable and Versatile Dashboard

Users have the freedom to design dashboards to align with their specific requirements. The dashboard's information scope and visual appearance are highly flexible, offering nearly limitless combinations.

### Multi-Dashboard

Users can create multiple dashboards, each with its unique design. The flexibility extends to copying, editing, and arranging these dashboards as per the user's preference.

### Multi-Tenancy

Hierarchical relationships allow parent companies to have child companies under their umbrella. This structure can extend to multiple levels without limitations.

### Monitoring Customization

Users can also selectively choose parameters for monitoring based on their preferences, helping to save data by only collecting data for parameters that are of interest to the user.

### Geographical Mapping

For routers equipped with GPS modules, the application offers the capability to display their geographical positions on a map within the dashboard. Users can easily identify the location of a router in case of need.

## SECURE

### Two-Factor Authentication (2FA)

For added security, users can implement Two-Factor Authentication (2FA) to enhance the authentication process and protect user accounts.

### Auditing

All activities, including alerts, API usage, billing, device management, and user actions, are carefully logged and available for review.

### Fine-Grained Permission Control

Users can have customized access based on their role within parent or child companies, allowing for precise control over permissions.

### Alerts

Set up alerts based on any monitoring or configuration parameter. For individual devices or across an entire device network.

### PKI for Mutual Authorization

Our application employs PKI (Public Key Infrastructure) for mutual authorization between routers and the application. This robust security measure ensures the integrity and security of communication between devices and the system.

## WebAccess/DMP

is a 24/7 SaaS (Software-as-a-Service) platform with no setup costs or commitments.

Just sign up at [www.wadmp3.com](http://www.wadmp3.com) to manage up to 5 devices for free no time limits, no payment details required, and unlimited users. For organizations needing local deployment, the platform is also available as a bare-metal on-premises solution.



Regional Service & Customization Centers

China	Kunshan 86-512-5777-5666	Taiwan	Taipei 886-2-7732-3399	Netherlands	Eindhoven 31-40-267-7000	USA	Milpitas, CA 1-408-519-3800
-------	-----------------------------	--------	---------------------------	-------------	-----------------------------	-----	--------------------------------

Worldwide Offices

Asia Pacific		Asia Pacific		Europe		Americas	
<b>Taiwan</b>		<b>Japan</b>		<b>Netherlands</b>		<b>United States</b>	
Toll Free	0800-777-111	Toll Free	0800-500-1055	Eindhoven	31-40-267-7000	Cincinnati	1-888-576-9668
Taipei	886-2-7732-3399	Tokyo	81-3-6802-1021	Breda	31-76-523-3100	Milpitas	1-408-519-3800
Taichung	886-4-2372-5058	Osaka	81-6-6267-1887	<b>Germany</b>		Irvine	1-800-866-6008
Kaohsiung	886-7-392-3600	Nagoya	81-052-291-4860	Munich	49-89-12599-0	Ottawa	1-800-346-3119
		Nogata	81-949-22-2890	Düsseldorf	49-2103-97-885-0	Chicago	1-513-742-8895
		<b>Korea</b>		Amberg	49-9621-9732-100	Boston	1-800-866-6008
		Toll Free	080-363-9494/5	<b>France</b>		<b>Canada</b>	
		Korea HQ (Seoul)	080-363-9494/5	Paris	33-1-4119-4666	Toronto	1-800-866-6008
		<b>Singapore</b>		<b>Italy</b>		<b>Brazil</b>	
		Singapore	65-6442-1000	Milan	39-02-9544-961	Toll Free	0800-770-5355
		<b>Malaysia</b>		<b>UK</b>		São Paulo	55-11-5592-5355
		Kuala Lumpur	60-3-7725-4188	Newcastle	44-0-191-262-4844	Itajuba	55-35-3623-5949
		Penang	60-4-537-9188	London	44-0-208-317-1380	<b>Mexico</b>	
		<b>Thailand</b>		<b>Spain</b>		Toll Free	1-800-467-2415
		Bangkok	66-02-2488306-9	Madrid	34-91-668-86-76	Mexico City	1-800-467-2415
		<b>Vietnam</b>		<b>Sweden</b>		Guadalajara	52-33-3169-7670
		Hanoi	84-24-3399-1155	Stockholm	46-0-864-60-500	<b>Middle East and Africa</b>	
		Hochiminh	84-28-3836-5856	<b>Poland</b>		<b>Israel</b>	
		<b>Indonesia</b>		Warsaw	48-22-31-51-100	Kadima-Zoran	072-2410527
		Jakarta	62-21-751-1939	<b>Czech Republic</b>		<b>Turkiye</b>	
		<b>Australia</b>		Ústí nad Orlicí	420-465-524-421	Istanbul	90-212-222-0422
		Toll Free	1300-308-531	<b>Ireland</b>		Bursa	90-850-840-3995
		Melbourne	61-3-9797-0100	Galway	353-91-792444		
		<b>India</b>					
		Bangalore	1-800-425-5071				
		Pune	91-94-2260-2349				

WebAccess/DMP

COMPATIBLE WITH v2, v2i, v3 AND v4 FAMILY OF THE ADVANTECH CELLULAR ROUTERS & GATEWAYS.



Enabling an Intelligent Planet

www.advantech.com

Please verify specifications before quoting. This guide is intended for reference purposes only. All product specifications are subject to change without notice. No part of this publication may be reproduced in any form or by any means, electronic, photocopying, recording or otherwise, without prior written permission of the publisher. All brand and product names are trademarks or registered trademarks of their respective companies. © Advantech Co., Ltd. 2025