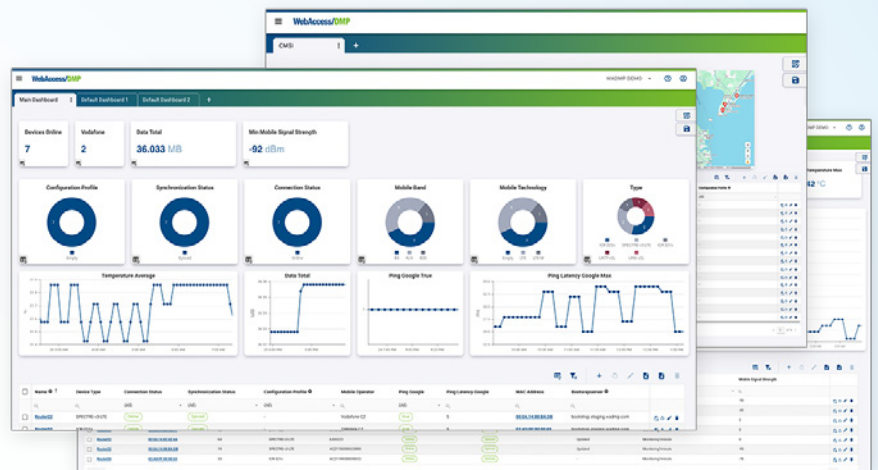


# WebAccess/DMP

INDUSTRIAL NETWORK MANAGEMENT  
**POWERFUL, FLEXIBLE, AND SECURE**

- ✓ Centralized management for routers
- ✓ VPN management
- ✓ Digital twin model
- ✓ Zero touch functionality
- ✓ Customizable and multiple dashboards
- ✓ Monitoring and auditing
- ✓ 2FA extra security layer
- ✓ Fully API Enabled



**TRY IT OUT**  
[www.wadmp3.com](http://www.wadmp3.com)  
**FREE**



**ADVANTECH**

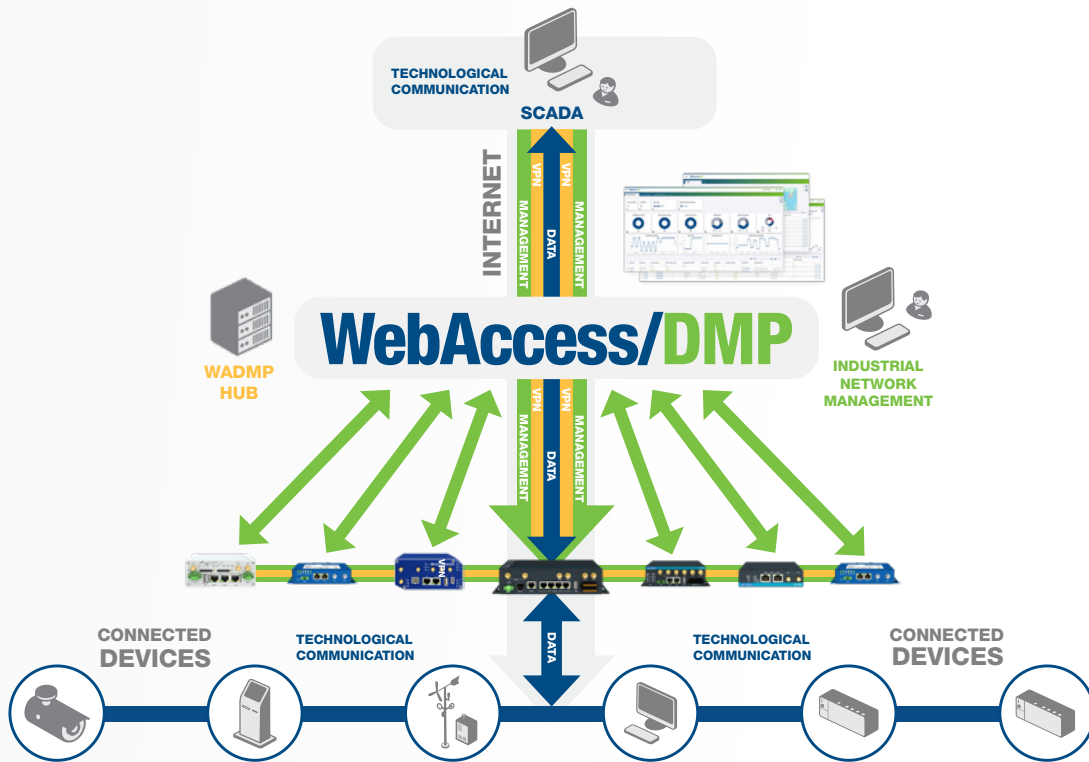
*Enabling an Intelligent Planet*

[www.advantech.com](http://www.advantech.com)

# WebAccess/DMP

## Industrial Router Network Management - Powerful, Flexible, and Secure

WebAccess/DMP provides **centralized management** for your routers, allowing **remote configuration** and **monitoring** with **customizable dashboards** and **alerts**. It enhances security with **two-factor authentication** and **PKI encryption**. Complementing this, **VPN Management** simplifies network connectivity by **automating VPN setup** across diverse networks. Leveraging **WireGuard VPN** for its speed and security, it streamlines network management with features like **zero-touch provisioning**, flexible router grouping, and independent interface settings. This integrated solution **enhances network security, simplifies operations, and empowers businesses** with **greater control and visibility** over their network infrastructure.



### TRANSACTION MANAGEMENT

## APPLICATION EXAMPLE



**Region:** EMEA

**Product:** ICR-2000, ICR-4100, **WebAccess/DI**

**Application:** On-line transactional networks for national lotteries

- Dual SIM failover capability
- Support of Multicast
- DMVPN / GRE tunnels support
- Automatic mass update of configuration and firmware update
- Management and monitoring missions **WebAccess/D**

## BUSSINESS MODELS

### CLOUD



- Subscription based
- Pricing: Monthly subscription based on the number of devices.
- No need for in-house server infrastructure.
- Scalable – easily add or remove devices as needed.

### ON-PREMISES



- One-time upfront payment.
- Software installed on the customer's own servers.
- Full control of infrastructure.
- Suitable for businesses with strict regulatory or security requirements.
- Requires internal IT resources for maintenance, updates, and security.

# INDUSTRIAL ROUTER NETWORK MANAGEMENT

## POWERFUL

### VPN Management

Simplifies secure connectivity for critical industrial networks by automating router configurations, leveraging WireGuard VPN for high-speed security, and supporting flexible deployment with VPN RoadWarriors access.

### Digital Twin Model

Every device has its virtual counterpart within the application. This enables continuous monitoring and management of real and virtual devices configured identically.

### Configuration Profile Management

Easily create and assign configuration profiles with settings like firmware versions and RouterApp lists to one or many devices. Compare profiles to spot differences.

### Ping Tools

Check the health of your systems with unlimited ping monitoring that shows real-time status and latency. Quickly spot network issues before they disrupt performance.

### Efficient Data Handling

The application facilitates the export of router parameter tables to CSV files, enabling adjustments and subsequent importation back into the system.

### Zero Touch Deployment

Configure devices remotely without needing to be on-site. Pre-set configurations are applied automatically when a device connects, keeping everything updated.

## FLEXIBLE

### Customizable and Versatile Dashboard

Users have the freedom to design dashboards to align with their specific requirements. The dashboard's information scope and visual appearance are highly flexible, offering nearly limitless combinations.

### Multi-Dashboard

Users can create multiple dashboards, each with its unique design. The flexibility extends to copying, editing, and arranging these dashboards as per the user's preference.

### Multi-Tenancy

Hierarchical relationships allow parent companies to have child companies under their umbrella. This structure can extend to multiple levels without limitations.

### Monitoring Customization

Users can also selectively choose parameters for monitoring based on their preferences, helping to save data by only collecting data for parameters that are of interest to the user.

### Geographical Mapping

For routers equipped with GPS modules, the application offers the capability to display their geographical positions on a map within the dashboard. Users can easily identify the location of a router in case of need.

## SECURE

### Two-Factor Authentication (2FA)

For added security, users can implement Two-Factor Authentication (2FA) to enhance the authentication process and protect user accounts.

### Auditing

All activities, including alerts, API usage, billing, device management, and user actions, are carefully logged and available for review.

### Fine-Grained Permission Control

Users can have customized access based on their role within parent or child companies, allowing for precise control over permissions.

### Alerts

Set up alerts based on any monitoring or configuration parameter. For individual devices or across an entire device network.

### PKI for Mutual Authorization

Our application employs PKI (Public Key Infrastructure) for mutual authorization between routers and the application. This robust security measure ensures the integrity and security of communication between devices and the system.

## WebAccess/DMP

is a 24/7 SaaS (Software-as-a-Service) platform with no setup costs or commitments.

Just sign up at [www.wadmp3.com](http://www.wadmp3.com) to manage up to 5 devices for free no time limits, no payment details required, and unlimited users. For organizations needing local deployment, the platform is also available as a bare-metal on-premises solution.



## Regional Service & Customization Centers

**China** | Kunshan  
86-512-5777-5666

**Taiwan** | Taipei  
886-2-7732-3399

**Netherlands** | Eindhoven  
31-40-267-7000

**USA** | Milpitas, CA  
1-408-519-3800

## Worldwide Offices

### Asia Pacific

#### Taiwan

Toll Free 0800-777-111  
Taipei 886-2-7732-3399  
Taichung 886-4-2372-5058  
Kaohsiung 886-7-392-3600

#### China

Toll Free 800-810-0345  
Beijing 86-10-6298-4346  
Shanghai 86-21-3632-1616  
Shenzhen 86-755-8212-4222  
Kunshan 86-512-5777-5666  
Hong Kong 852-2720-5118

### Asia Pacific

#### Japan

Toll Free 0800-500-1055  
Tokyo 81-3-6802-1021  
Osaka 81-6-6267-1887  
Nagoya 81-052-291-4860  
Nogata 81-949-22-2890

#### Korea

Toll Free 080-363-9494/5  
Korea HQ (Seoul) 080-363-9494/5

#### Singapore

Singapore 65-6442-1000

#### Malaysia

Kuala Lumpur 60-3-7725-4188  
Penang 60-4-537-9188

#### Thailand

Bangkok 66-02-2488306-9

#### Vietnam

Hanoi 84-24-3399-1155  
Hochiminh 84-28-3836-5856

#### Indonesia

Jakarta 62-21-751-1939

#### Australia

Toll Free 1300-308-531  
Melbourne 61-3-9797-0100

#### India

Bangalore 1-800-425-5071  
Pune 91-94-2260-2349

### Europe

#### Netherlands

Eindhoven 31-40-267-7000  
Breda 31-76-523-3100

#### Germany

Munich 49-89-12599-0  
Düsseldorf 49-2103-97-885-0  
Amberg 49-9621-9732-100

#### France

Paris 33-1-4119-4666

#### Italy

Milan 39-02-9544-961

#### UK

Newcastle 44-0-191-262-4844  
London 44-0-208-317-1380

#### Spain

Madrid 34-91-668-86-76

#### Sweden

Stockholm 46-0-864-60-500

#### Poland

Warsaw 48-22-31-51-100

#### Czech Republic

Ústí nad Orlicí 420-465-524-421

#### Ireland

Galway 353-91-792444

### Americas

#### United States

Cincinnati 1-888-576-9668  
Milpitas 1-408-519-3800  
Irvine 1-800-866-6008  
Ottawa 1-800-346-3119  
Chicago 1-513-742-8895  
Boston 1-800-866-6008

#### Canada

Toronto 1-800-866-6008

#### Brazil

Toll Free 0800-770-5355  
São Paulo 55-11-5592-5355  
Itajuba 55-35-3623-5949

#### Mexico

Toll Free 1-800-467-2415  
Mexico City 1-800-467-2415  
Guadalajara 52-33-3169-7670

### Middle East and Africa

#### Israel

Kadima-Zoran 072-2410527

#### Turkiye

Istanbul 90-212-222-0422  
Bursa 90-850-840-3995

# WebAccess/DMP

COMPATIBLE WITH v2, v2i, v3 AND v4 FAMILY OF THE ADVANTECH CELLULAR ROUTERS & GATEWAYS.



v1

ICR-16xx, ICR-17xx



v2i

ICR-2xxx



v3

ICR-3xxx, SmartFlex, SmartStart



v4

ICR-44xx



v4i

ICR-41xx, ICR-42xx

# ADVANTECH

Enabling an Intelligent Planet

[www.advantech.com](http://www.advantech.com)

Please verify specifications before quoting. This guide is intended for reference purposes only.

All product specifications are subject to change without notice.

No part of this publication may be reproduced in any form or by any means, electronic, photocopying, recording or otherwise, without prior written permission of the publisher.

All brand and product names are trademarks or registered trademarks of their respective companies.

© Advantech Co., Ltd. 2019